

St. David's RC PS



School Handbook

2024 - 2025

A Foreword from the Executive Director of Education, and Children's Services

Session 2024 - 2025

Dear Parents/Carers,

This brochure contains a range of information about your child's school which will be of interest to you and your child. It offers an insight into the life and ethos of the school and also offers advice and assistance which you may find helpful in supporting and getting involved in your child's education.

We are committed to working closely with parents and carers as equal partners in your child's education, in the life of your child's school and in city-wide developments in education.

Parental involvement in the decision making process and in performance monitoring are an integral part of school life. We look forward to developing that partnership with your support.

Throughout this handbook the term 'parent' has the meaning attributed in the Standards in Scotland's Schools Act 2000 and the Scottish Schools (Parental Involvement) Act 2006. This includes grandparents, carer or anyone else who has parental responsibility for the child.

I am pleased to introduce this brochure for session 2024 - 2025 and hope that it will provide you with the information you need concerning your child's school.

If you have any queries regarding the contents of the brochure please contact the Head Teacher of your child's school in the first instance who will be happy to offer any clarification you may need.

Amanda Hatton

Executive Director – Education and Children's Services

Children and Families Vision

Our vision is for all children and young people in Edinburgh to enjoy their childhood and fulfil their potential.

We believe that children and young people do best when:

- they are able to live safely and happily within their own families with the right kind of support as needed
- they attend first class, inclusive schools and early years settings which meet their needs

We will do all we can to strengthen support for families, schools and communities to meet their children's needs.

Our mission is to place children, young people and families at the heart of our service and provide support when it is needed throughout childhood and the transition to adulthood.

In Edinburgh children and young people are at the heart of our vision for the future.

As an inclusive community we work with parents, carers and, where appropriate, partner agencies to support all children and young people.

By working together, we help children and young people to develop understanding about relationships, respect, teamwork, honesty, fairness, patience, and compassion. We do this by offering interesting and relevant learning experiences, by providing our staff with the training and resources they need, and by working with the whole community to accept and care for one another. This isn't always easy, but we believe it is essential so that our children and young people understand the people they meet and learn how to work together to handle setbacks and difficult situations throughout their lives.

When children and young people experience adverse events or as a response to their additional support need, they let us know by reacting in different ways. This presents difficulties for those around them. By working together, by understanding the cause and working out solutions, we can find a way to solve or deal with a problem. If it takes time to get over a problem we will work with a child, young person, and their family to work out the best way forward. This may involve making adaptations and providing additional support or in exceptional circumstances identifying a change of environment.

We recognise that we all experience difficult times, and that everyone deserves the best possible care and support. In Edinburgh we support children and young people to learn in different ways according to their needs. As children and young people learn to read, write, and count some require more support than others do. This need for support arises for a variety of reasons learning difficulties, challenges with emotional regulation and social communication issues. We must meet the needs of all our students in a fair, compassionate, and proportionate way.

In considering how to support all children and young people reach their full potential it may not always be possible to arrive at a resolution all parties agree. However, we will listen to any parent, young person, child or member of staff and work together to resolve difficulties.

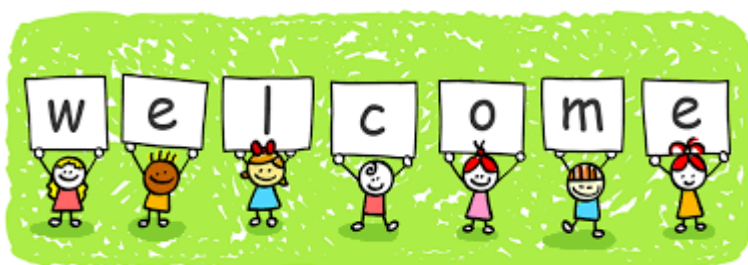
We are committed to do all we can to make Edinburgh an inclusive place to live and learn.



Lorna French

Acting Head of Schools and Lifelong Learning and Chief Education Officer

Head teacher



Dear Parents and Carers

All at St. David's Roman Catholic Primary School in Edinburgh offer you a very warm welcome to our school. It is with great pride that as Head Teacher of St. David's I extend this welcome to you.

St. David's is a diverse and inclusive family school. We recognise that each child is unique and that each child has the right to achieve his or her full potential. We understand that you are entrusting us with the education of your child.

We have a broad and balanced curriculum, which is delivered by a team of caring and committed professionals.

As a Catholic Primary School, Christ and the Gospel values are at the heart of all we do. It is our mission to ensure that our pupils are secure and safe in their learning environment and that they receive the kind of education which offers them opportunities to maximise their talents and potential, encouraging them to be life long, successful and confident learners and responsible citizens of the future.

Partnerships are vital to the work we do. Partners share, plan and deliver together. We work hard at developing partnerships with our parents and carers; you as a parent/carer in our school have an important role to play in our community.

We have good working partnerships with our parish family. We work in partnership with our cluster schools and our neighbouring schools and the many multi-disciplinary professionals and groups who help us offer the kind of service which is necessary and important to our pupils. Our school community—pupils, parents and staff are the heart of our school.

I am sure that your child will have a positive learning experience and enjoy their time with us at St. David's Primary School.

I hope you find our St. David's RC PS School Handbook for session 2024/25 useful and we are delighted to share information about our school with you.

This handbook offers an introduction to our school and a general overview of the education your child will be getting at school.

To make our handbook easy to use we have divided the information into five different sections: -

- | | |
|------------------------|---|
| ➤ Section One | Practical Information about the School |
| ➤ Section Two | Parental Involvement in the School |
| ➤ Section Three | School Curriculum |
| ➤ Section Four | Support for Pupils |
| ➤ Section Five | School Improvement |

If you have any questions or would like any further information on any aspect of this handbook or the education of your child, please do not hesitate to contact the school.

Kind regards,

Mrs Angela Burgess

Headteacher



A Charter for Catholic Schools in Scotland

The mission of the Catholic school is to develop as a community of faith and learning, providing the highest quality of education, and offering formation through the promotion of Gospel values, through celebration and worship, and through service to the common good.

All Catholic schools in Scotland, in honouring Jesus Christ as the Way, the Truth and the Life, will feature the following characteristics:

- a commitment to the integrated education and formation of the whole person, in close partnership with parents as the first educators of their children;
- an inclusive ethos which aims to honour the life, dignity and voice of each person, made in the image of God;
- a commitment to the search for wisdom in life and to the pursuit of excellence, through the development of each person's unique God-given talents;
- a commitment to the spiritual formation of the school community, through the shared experience of prayer and liturgy, and in partnership with local parishes;
- the provision of religious education programmes which will enable young people to develop their understanding of Gospel values and of how to apply them to life;
- a commitment to uphold the moral teaching, faith tradition and sacramental life of the Catholic Church;
- a commitment to communicate Catholic social teaching and thereby to promote social justice and opportunity for all;
- a commitment to ecumenical action and the unity of Christians;
- the promotion of respect for different beliefs and cultures and for inter-faith dialogue;
- a commitment to support the continuing professional and spiritual development of staff.

All staff appointed to a Catholic school are expected to support and promote the aims, mission, values and ethos of the school, as illustrated in this Charter.

For more information, contact the Scottish Catholic Education Service (SCES).
Phone: 0141 556 4727; Fax: 0141 551 8467; E-mail: mail@sces.uk.com.

Section One – Practical Information about the School

This section deals with the practical aspects of your child's attendance at our school. It provides details on such things as:

Communicating with the School

This section provides you with some background information on our school and our Nursery. It tells you how our school day and school year are made up and how to contact the school if, for example, your child is ill.

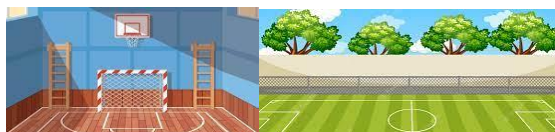
<u>Contact Details</u>	
Head Teacher	Mrs Angela Burgess admin@st-davids.edin.sch.uk
Depute Head Teacher	Miss Shannon Thorpe admin@st-davids.edin.sch.uk
Principal Teacher	Miss Nikki Wright admin@st-davids.edin.sch.uk
Development Officer	Miss Caitlin Brownlie admin@st-davids.edin.sch.uk
Business Manager	Mrs Zoe Young admin@st-davids.edin.sch.uk
Administrator	Miss Heather McGinlay admin@st-davids.edin.sch.uk
Address	4 West Pilton Crescent EDINBURGH EH4 4HP
Telephone Number	0131 332 3500
Website	www.saintdavidsrc.com
E-mail Address	admin@st-davids.edin.sch.uk
Twitter	@saintdavidsrcps
Nursery Twitter	@nurserystdavids
<u>About the School</u>	
Stages of Education provided for	Nursery to P7
Present Roll	P1-P7 - 345
Denominational status of the school	Roman Catholic
Organisation of the School Day P1-P7	

PE/Outdoor Learning with Mr. Creaney

Your child will enjoy 2 hours of Physical Education each week.



PE will be taught Mr Creaney (1hr) and your child’s teacher (1hr). Lessons will be in the school gym hall or outdoors on the Astroturf.



PE Kit – On PE days, your child should come to school dressed in their PE kit with school sweater. Please avoid team football strips.



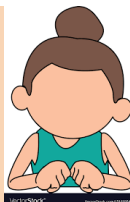
Indoor shoes for the gym hall.



Outdoor shoes for the Astroturf.



- ✓ Please ensure that your child’s name is written on all clothing!
- ✓ Warm clothing for outdoor PE.
- ✓ All Jewellery removed and long hair tied back.
- ✓ Remember your water bottle!



St David’s PE Kit can be bought from Borders Embroideries:

<https://www.border-embroideries.co.uk/schools/st-davids-rc-primary-school-edinburgh.html>

If you require support with uniform and PE kit, please let us know. There are a number of charities we can contact for help.

Term Dates

Term dates for the coming years can be found at:

<https://www.edinburgh.gov.uk/schools/term-dates>

School Session Dates 2024/25

Staff resume		Monday	12 August *	2024
Staff only		Tuesday	13 August *	2024
Pupils resume		Wednesday	14 August	2024
Autumn Holiday	Schools closed	Monday	16 September	2024
All resume		Tuesday	17 September	2024
Mid-term	All break	Friday	11 October	2024
Staff resume		Monday	21 October*	2024
Pupils resume		Tuesday	22 October	2024
Term ends		Friday	20 December	2024

Staff resume		Monday	6 January*	2025
Pupils resume		Tuesday	7 January	2025
Mid-term	All break	Friday	7 February	2025
All resume		Monday	17 February	2025
Term ends		Friday	4 April	2025

<i>The Easter break incorporates the following two holidays</i>				
Good Friday	Schools closed	Friday	18 April	2025
Easter Monday	Schools closed	Monday	21 April	2025

All Resume		Tuesday	22 April	2025
May Holiday		Monday	5 May	2025
Staff only		Tuesday	6 May*	2025
Pupils resume		Wednesday	7 May	2025
Victoria Day	Schools closed	Monday	19 May	2025
All resume		Tuesday	20 May	2025
Term ends		Thursday	26 June	2025

* Five In-Service days for all schools.



Registration and enrolment

The date for registration of new school entrants is advertised in all local nurseries, in the local press and on the council's website www.edinburgh.gov.uk.

Registration for Primary One and First Year Secondary takes place in November each year. Pupils should be registered in only one school for their catchment area. Parents will be provided with information about the school, when they register their child.

Parents who want to send their child to a school other than the catchment school must make a placing request. Please refer to section four of this handbook for more information on placing requests.

Parents of pupils who have moved into the catchment area or, who wish their child to transfer to the school, should contact the school office for information.



Attendance and absence

It is the responsibility of parents of a child of school age to make sure that their child is educated.

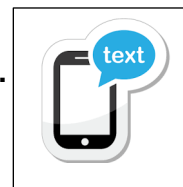
Absence from school is recorded as

- authorised, that is approved by the Communities and Families department, or as
- unauthorised, that is unexplained by the parent (truancy).

Please let the school know by letter if it is a planned absence (e.g. hospital appointment) or phone by 9.30 a.m. on the day of your child's unplanned absence (e.g. sickness bug).

You can also leave a message at any time on the school answer phone machine 0131 332 3500.

If you do not call the school, you will get a text from the school.



You should update the school on each day of your child's absence. Please give your child a note on their return to school, confirming the reason for absence. This can be written in your home-language. If there is no explanation from a child's parents, the absence will be regarded as unauthorised.





Attendance



Pupil attendance at school is very important and pupil absence is monitored closely. The aim of the council is that pupil attendance is 95% or above. We want to work with you to help ensure your child's attendance is very good and if there is anything we need to be aware of or can help you with then please contact the school office in the first instance.



School Day



It is important that pupils arrive to school on time so that they do not miss the start of the school day and learning. It is also important that you collect your child on time at the end of the day of the day to allow staff to attend meetings, training or to prepare for lessons. If you know you are going to be late at the start or end of the school day, then please phone the school office to let them know. This is something that is monitored and may result in the school contacting you to discuss.



Holidays

Please make every effort to avoid family holidays during term time as this will disrupt your child's education and reduces learning time.

Headteachers can approve absences **up to** two school weeks (10 days) from school in certain situations. Any requests for extended absence over two school weeks (10 days) will be referred to the Senior Education Officer, who will decide if it will be recorded as authorised or unauthorised leave.

Please discuss your plans with your child's Headteacher before booking the holiday. If they cannot give permission before the holiday, it will be recorded as unauthorised absence. They can authorise a holiday if you can prove that work commitments make a family holiday impossible during school holiday times. Normally, your employer will need to provide evidence of your work commitments. Absence approved by the Headteacher on this basis is regarded as authorised absence.

Parents from minority ethnic religious communities may request that their children be permitted to be absent from school to celebrate recognised religious events. Absence approved on this basis is regarded as authorised absence. Extended leave can also be granted on request for families returning to their country of origin for cultural or care reasons.

A supportive approach is taken to unexplained absence. However, the Communities and Families department has legal powers to write to, interview or prosecute parents, or refer pupils to the Reporter to the Children's Panel, if necessary.



School Uniform

Parents are asked to co-operate with the school in encouraging the wearing of the school uniform.

The school uniform was agreed in consultation with parents, pupils, staff and the Parent Council. It incorporates a range of popular items of dress, e.g. sweatshirts, T-shirts. Wearing school uniform contributes to a positive school ethos and helps avoid discrimination and reduces peer pressure to wear expensive designer clothing.

A school's reputation can also be enhanced in the local community by the wearing of school uniform and school security will be improved as it will be easier to identify intruders.

Primary 1 – 6

We ask pupils to wear;

- royal blue sweatshirt, jumper or cardigan
- white polo shirt, shirt or blouse
- grey/black trousers, skirt or pinafore
- blue checked summer dress
- school tie (optional)
- black shoes



If you want to buy our labelled school uniform is available to purchase online at:
www.beschoolwear.co.uk

These items without the school logo can be bought at many of the local supermarkets.

P7 School Uniform

To recognise our senior pupils and in preparation for High School pupils in will be provided with a specially designed P7 tie. We request that they wear this with a white school shirt and grey/black school trousers/skirt or pinafore. This will also be a requirement if they wish to apply for a Prefect and/or House Captain role.



Physical Education



The appropriate clothing and footwear for PE is a T-shirt, shorts and gym shoes with non-marking soles. These are necessary for health and safety reasons and your co-operation is requested to ensure that pupils are equipped to participate in the PE lessons.

Football colours are not appropriate for PE as they can lead to incidents of rivalry.

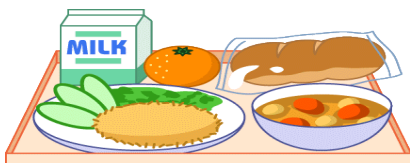


Please ensure that **all items of clothing are clearly labelled**, particularly ties, sweatshirts and PE equipment which are often lost.

Please help us by ensuring that pupils do not bring valuable or expensive items of clothing to school.

In certain circumstances, appropriate clothing will be necessary for school activities for safety reasons, e.g. in games areas, outdoor learning, school trips; this extends to the wearing of suitable footwear and even, on occasion, to the length of pupils' hair and the wearing of jewellery and earrings.

If you have any queries regarding the school's dress code, please contact the school office.



School Meals

Menus offer healthy and tasty meal options while reflecting the Scottish Governments food and drink legal requirements in both primary and secondary settings. Our menus are written to balance pupil choice with the most stringent of school food standards in the UK.

All our menus are nutritionally analysed and new dishes trialled by pupils prior to menu launch

- All our meat is either Quality Meat Scotland or Red Tractor Assured
- All our dairy comes from Scottish Farms
- All eggs used are Free Range
- All fish is MSC certified
- We believe in sourcing food with provenance and aim to increase our spend with Scottish suppliers every year

The catering service supplies meals for pupils by following the special diet policy – more information on menus/ special diets and prices can be found here;

<https://www.edinburgh.gov.uk/food-clothing/lunch-menus-schools>



All P1-P5 children are currently entitled to a free school lunch

All lunches MUST be booked online

ParentPay activation letters will be given to your child once they have enrolled in school

Session 2024-25 P6 – P7 School Lunches - £2.50 per day

All lunches MUST be booked & paid online

ParentPay activation letters will be given to your child once they have enrolled in our school.

All school lunches must be booked by the Wednesday prior to the week needed.

Menus will be provided with a meat and vegetarian option.

If your child has any dietary requirements, then please speak to the school office.



Packed Lunch

You may provide your child with their own packed lunch from home.

We would suggest

- a sandwich
- a yoghurt
- fresh fruit or vegetables
- water to drink



Morning Snack

St David's is a Health promoting school, if you wish to send in a small snack, please make sure it is something healthy.

It is also helpful if you can provide your child with a bottle of water with their name on it.



If you would like your child to drink milk at school, you must pay via ParentPay.





Free School Meals & Clothing Grants

School Grants

Families on low income can get school grants to help with the cost of lunches and school clothing.

All children in primary 1 to 5 receive free school meals, regardless of your income or benefit status. However, if you meet any of the following conditions you will be eligible to receive

- free school meals for your children in P6, P7 and in secondary school
- payment for lunches during school holidays
- free milk
- a school clothing grant payment of £120 for each primary child and £150 for each secondary child, paid once a year into your bank account

You must receive one of the following benefits:

- Universal Credit (where your monthly earned income is not more than £726)
- Income Support
- Income-based Job Seeker's Allowance
- Income-based Employment and Support Allowance
- Support under Part VI of the Immigration and Asylum Act 1999
- Child Tax Credit, but not Working Tax Credit, and your income is less than £18,725
- Both Child Tax Credit and Working Tax Credit and an income of up to £8,717

Your child might still get school grants if you're experiencing financial hardship. This could be because:

- your immigration status means you cannot get help from the government
- you're still waiting on your first Universal Credit notice

School grants are valid for **one school year**. The entitlement ends if your child leaves school before the end of the school year.

Information on school grants and how to apply is available on the website:

www.edinburgh.gov.uk/schoolgrants



Travel to and from School



We encourage our pupils to walk to school as the majority of our pupils live in the school catchment. Parents are requested, when dropping off/collecting children from school that they do not park in any location which causes an obstruction and they take care not to restrict the view of the school crossing patrol.

Please leave Disabled Parking free for our families who have a blue badge who require them to get their child to school on time.

Please note the school car park is out of bounds to parents/carers and will be locked during school start and finishing times.

General Supervision

Before school begins supervision is parental responsibility, therefore pupils should not arrive at school until as near to the school start time as possible.

During break and lunchtime, support staff supervise the children in the playground. There is always access to the building and toilets, and the children are made aware of this.

Some schools offer Breakfast Clubs which have their own supervision arrangements prior to the start of the school day.



Breakfast Club

We currently run a free breakfast club from Monday to Friday from 7.50am where children can have a healthy breakfast and socialise with friends. At 8.40am pupils in

P3-P7 go into the playground and P1 – P2 pupils are supervised until the bell rings at 8.50am.

Please note places are very limited and the club is over-subscribed, so your child will probably go on a waiting list until a space becomes available. Applications are reviewed and offered on a need basis by the Head teacher.

Please complete an application form at the school office.

After school club

This is available for parents/carers and is a paid service provided by North Edinburgh Childcare. The club is based in Pirniehall Primary School. Please contact the school office for more information or call the after-school club manager Jill Owen 0131 332 8001 or info@northedinburghchildcare.co.uk.



School Security

The safety and security of pupils and staff when attending or working in a school is very important to us. Schools use a number of security measures including visitors' books, badges and escorts, while visitors are within the school building.

Everybody calling at a school for any reason will be asked to report to the school office. The school staff then can make the necessary arrangements for the visit. We would respectfully ask that parents do not attempt to enter schools through another entrance, unless supervised by a member of staff.

If you wish to speak to a member of staff, then please come to the school office where we shall be happy to arrange this for you.



Wet Weather Arrangements

When the weather is bad, pupils will be brought into the school hall from 8.40am and will be supervised by staff until 8.50am.

Pupils will be supervised in their classrooms by support staff during school break and lunchtime.



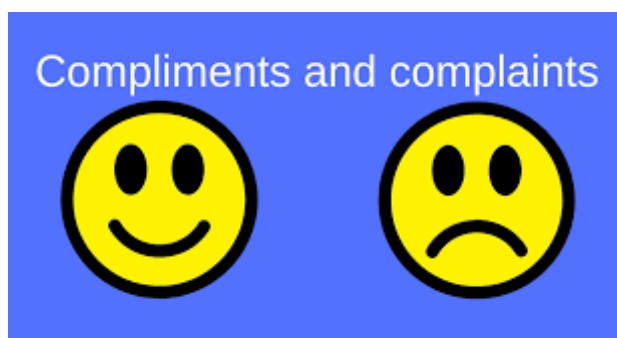
Unexpected Closures

In the event of an emergency, such as Covid, a power cut or severe weather, that prevents schools from opening in the morning or results in an early closure a range of communications channels are used to let parents know.

We will aim to let you know as soon as possible through Group call and by putting a message on our website and school twitter account.

In addition, announcements will be made on local radio stations and via the Council's corporate Twitter account [www.twitter.com/Edinburgh_CC](https://twitter.com/Edinburgh_CC) and Facebook page www.facebook.com/edinburghcouncil.

If many schools are affected, or the situation is likely to be prolonged, then the Council's website <https://www.edinburgh.gov.uk/schoolclosures> will also be used.



Complaints, Comments and Suggestions Procedure

We all hope that you will be completely satisfied about your child's education and we encourage feedback on our services from parents and pupils. We are, therefore, interested in feedback of all kinds, whether it be compliments, suggestions or complaints.

If you want to register a comment of any type about our school you can do this by writing, e-mailing, telephoning or making an appointment to see someone. All feedback is welcome and keeps us in touch.

If, in particular, you have a complaint about the school, please let us know. It is better that these things are shared openly and resolved fairly, rather than being allowed to damage the relationship between the family and the school. There will be no negative consequences arising from making a complaint and we will deal with the issue as confidentially as possible.

There are some things which you should take note of in relation to making a complaint:

- Please make any complaints initially to the Headteacher. This makes sure that the school knows what is going on and has an opportunity to respond and resolve the issue.
- We will try to respond as quickly as possible, but often issues are complex and we need time to investigate.
- If you are dissatisfied with the service or/and with our response then you will have the right to take the matter further and contact Advice and Complaints Service (Schools and Lifelong Learning) email: cf.complaints@edinburgh.gov.uk or by telephone: 0131 469 3233.

Further information can be found here - <https://www.edinburgh.gov.uk/contact-us/comments-complaints/3>

If you remain dissatisfied after the further investigation and reply you can take the matter up with the Scottish Public Services Ombudsman, our reply will include the contact details.



Health and Safety

Within the general policy laid down by The City of Edinburgh Council, the Education and Children's Services Department prepared and has continuing development of, safety policy statements for all areas of its responsibility and accordingly manages health and safety and welfare in a way that complies with health and safety statutory and regulatory requirements, and all relevant approved codes of practice and guidance.

School staff are fully instructed in their responsibilities in this respect, and safety regulations apply to all aspects of school life, both on and off the premises.

It is expected that pupils will behave responsibly and comply with all safety requirements.

The support of parents/carers in promoting good practice in health and safety matters is of great importance to the school.



Collecting your child from school



© Can Stock Photo

If a parent decides their child in P4-P7 is responsible enough to walk to and home from school on their own, then they can do so. Pupils in P1, P2 & P3 will always be handed over to a known adult. If someone new or different will be picking up your child can you please let the class teacher know in writing or inform the school office who will pass the message on. If you do not do this the school will not hand over your child until they have contacted you.



Information about how we manage pupil data in schools/ELC settings

St. David's RC PS and Nursery has a legal responsibility to deliver an effective educational programme to its pupils. In order to do this, we need to collect personal data about our pupils/children and their families so that we can help them learn and keep them safe. The type of personal data we will collect include:

Data about our pupils/children and their families

This will include the name, address and contact details of the pupil/child and relevant family members. It will also include information about relevant medical conditions, any additional supports which are needed, and their family situation. We need this information to ensure we know our pupils/children and their families, and to ensure we are able to educate them appropriately and keep them safe.

We will also collect personal data relating to personal or protected characteristics, such as ethnic group to enable statistics to be reported. We need this information so the Council can ensure it is delivering education appropriately to all its citizens.

Data about pupils/children at school/within ELC setting

This will include data about progress, assessments, and exam results. It will also include records of attendance, absence, and any exclusions. We need this information to understand how our pupils/children are progressing, and to assess how we can help them to achieve their best.

Data about when and where they go after they leave us

This will include information about their next setting/school, career paths or intended destinations. We need this information to ensure we support our pupils/children in all their transitions and do all that we can to help their future be a success.

There will be times where we also receive information about them from other organisations, such as a pupils' previous school, the previous local authority where that school or ELC setting was based, NHS Lothian, Police Scotland, Social work, Additional Support Services, and sometimes other organisations or groups connected to a pupil's education. We use this data similarly to the above: to support

our pupils' learning, monitor and report on their progress, provide appropriate pastoral care; and assess the quality of our services.

When we collect and use personal data within St David's RC Primary School and Nursery, and for the reasons detailed above, we will normally be acting in accordance with our public task. Occasionally we are also required to process personal data because the law requires us to do so, or because it is necessary to protect someone's life.

We will also take photographs in St David's (school and nursery) and display them on our walls, and in newsletters and other communications. We do this in order to celebrate and share what we have done, including individual achievements and successes. We consider this use of images to be part of our public task as it helps us build an effective community which supports learning. We will not, however, publish these photographs on social media or in newspapers without permission. Consent for this use will be sought when a pupil/child joins St. David's RC PS and Nursery and will be kept on record while they are with us. Consent can be withdrawn at any time, please just let us know.

Sometimes we need to share pupil information with other organisations. We are required, by law, to pass certain information about our pupils to the Scottish Government and the Council. This data is for statistical purposes and will normally be anonymised. It is normally required to enable the Council, and the Government, to understand how education is being delivered and to help them plan for future provision. Further information about what the Scottish Government does with statistical data it receives is provided below.

If a pupil/child moves schools/ELC settings, we have a legal obligation to pass on information to their new school/education authority about their education at St. David's RC PS and Nursery

When we record and use personal data, we will only collect and use what we need. We will keep it securely, and it will only be accessed by those that need to. We will not keep personal data for longer than is necessary and follow the Council's Record Retention Schedule and archival procedures when records are identified to be of historical value and require to be retained in the Edinburgh City Archives.

For more information on how the Council uses personal data, and to know more about your information rights including who to contact if you have a concern, see the [City of Edinburgh's Privacy Notice](#).

Sharing personal data to support Wellbeing

In addition to the above, St. David's RC PS and Nursery has a legal duty to promote, support and safeguard the wellbeing of children in our care.

Wellbeing concerns can cover a range of issues depending on the needs of the child. Staff are trained to identify when children and families can be supported and records are kept when it is thought that a child could benefit from help available in the school/ELC setting, community or another professional. You can expect that we will tell you if we are concerned about your child's wellbeing and talk to you about what supports might help in the circumstances. Supports are optional and you will not be required to take them up.

If it would be helpful to share information with someone else, we will discuss this with you and seek your consent before we share it so that you know what is happening and why. The only time we will not seek consent to share information with another organisation is if we believe that a child may be at risk of harm. In these situations,

we have a duty to protect children, which means we do not need consent. On these occasions, we will normally tell you that information is being shared, with whom, and why – unless we believe that doing so may put the child at risk of harm.

We will not give information about our pupils to anyone without your consent unless the law and our policies allow us to do so.

Sharing educational data with the Scottish Government

The following information has been provided by the Scottish Government – Education and Training Division to let you know why they collect statistical information from school and what they do with it:

Education authorities and the Scottish Government collected data about pupils on paper forms for many years. We now work together with schools to transfer data electronically through the ScotXed programme. Thus, the Scottish Government has two functions: acting as a 'hub' for supporting data exchange within the education system in Scotland and the analysis of data for statistical purposes within the Scottish Government itself.

What pupil data is collected and transferred?

Data on each pupil is collected by schools, local authorities and the Scottish Government.

The data collected and transferred covers areas such as date of birth, Scottish Candidate Number (SCN), postcode, registration for free-school meals, whether a pupil is looked after by his/her local authority, additional support needs including disability and English as an Additional Language (EAL), and attendance, absence and exclusions from school.

The SCN acts as the unique pupil identifier. Pupil names and addresses are not passed to the Scottish Government. Your postcode is the only part of your address that is transferred for statistical purposes, and postcodes are grouped to identify 'localities' rather than specific addresses. Data is held securely and no information on individual pupils can or would be published by the Scottish Government.

Providing national identity and ethnic background data is entirely voluntary. You can choose the 'not disclosed' option if you do not want to provide this data. However, we hope that the explanations contained in this message and on the ScotXed website will help you understand the importance of providing the data.

Why do we need your data?

In order to make the best decisions about how to improve our education service, the Scottish Government, education authorities and other partners such as the Scottish Qualifications Authority and Skills Development Scotland need accurate, up-to-date

data about our pupils. We are keen to help all our pupils do well in all aspects of school life and achieve better examination results. Accurate and up-to-date data allows us to:

- plan and deliver better policies for the benefit of all pupils
- plan and deliver better policies for the benefit of specific groups of pupils
- better understand some of the factors which influence pupil attainment and achievement
- share good practice
- target resources better.

Your data protection rights

The collection, transfer, processing and sharing of ScotXed data is done in accordance with the Data Protection Act (2018). We also comply with the National Statistics Code of Practice requirements and other legislation related to safeguarding the confidentiality of data. The Data Protection Act gives you the right to know how we will use your data. This message can give only a brief description of how we use data. Fuller details of the use of pupil data can be found on the ScotXed website (www.scotxed.net).

The Scottish Government works with a range of partners including Education Scotland and the SQA. On occasion, we will make individual data available to partners and also academic institutions to carry out research and statistical analysis. In addition, we will provide our partners with information they need in order to fulfil their official responsibilities. Any sharing of data will be done under the strict control of the Scottish Government, which will ensure that no individual level data will be made public as a result of the data sharing and that these data will not be used to take any actions in respect of an individual. Decisions on the sharing of data will be taken in consultation with colleagues within and out with the Scottish Government.

Parental Requests for class lists

Information about your child is held securely and appropriate safeguards are in place. Due to these safeguards we are unable to provide parents and carers with the list of names your child is classmates with.

Concerns

If you have any concerns about the ScotXed data collections you can email the Senior Statistician, scotxed@scotland.gsi.gov.uk or write to The ScotXed Support Office, Area 1B, Victoria Quay, Leith, EH6 6QQ. Alternative versions of this page are available, on request from the ScotXed Support Office, in other languages, audio tape, braille and large print.



School Nursing Team

The School Nursing team is made up of the

- **School Nurse** (Specialist Qualified 3rd part Nursing and Midwifery Council (NMC) registrant – now masters level 11 post graduate degree)
- **Community Staff Nurses** (Registered Nurse on Part 1 of NMC – undergraduate degree)
- **Community Health Assistants** (not a nurse, may have SVQ qualifications in care related field)

Services provided: Universal Services for All School Age Children:

Child Health Surveillance Programme

- P1 eye tests by Health Assistant - (only for those who did not receive this preschool in nursery)
- Growth Measurements by Health Assistant– currently at Primary 1 and Parent health Questionnaire (this may change in the future dependant on Scottish Government obesity strategy and the Health Visitor assessment at 4-5 years preschool)
- Primary 7 health questionnaire - growth measurement may be added in the future linked to Scottish Government obesity prevention work
- Drop in Services - a drop in health zone for High School Pupils (either in school or community facility) who are seeking advice or support on sexual health and health related issues

Education of Staff and Pupils

- Staff training – CPD in-service days on health actions plans, anaphylaxis etc – will be usually be delivered by the staff nurse
- Healthcare Plans for pupils - education staff will be supported by staff nurses on the planning and education

Healthcare Needs of Children with Moderate to Complex Physical Nursing Needs:

- For children in Complex Needs Schools, nursing care needs will be delivered by the nursing team who are based in these designated schools

School Nurse Services for Children/Young People with Increased Needs:

10 key areas specialist school nurses will focus on:

- Emotional Health and Wellbeing
- Substance Misuse
- Child Protection
- Domestic Abuse
- Looked After Children
- Homelessness
- Youth Justice
- Young Carers

- Sexual Health
- Transitions

How to Refer

Children can be referred to the School Nurse by their school or their GP or other health care professional. Children and young people can also self-refer. They can do this by discussing this at drop ins or asking their teacher/ guidance teacher to refer them. Parents can refer by discussing with their GP or child's teacher/ guidance teacher.

Further information

Our NHS Lothian School Nursing Service web pages:

<https://services.nhslothian.scot/SchoolNursing>

Who Does What

- **GP** – all regular family health care
- **CAMHS** – Child and Adolescent Mental Health – Specialist service
- **Hospital Paediatric** – medical/surgical and other specialist services
- **Community Paediatrician** – doctors in community child health
- **CCN Team** – Community Children's Nurses - specialist paediatric trained nurses
- **AHPs** – Allied Health Professionals - speech and language therapy, physiotherapy, occupational therapy, dietetics, orthoptics – referral-based service
- **CVT** – Community Vaccination Team - nurses who deliver vaccination services to all age groups
- **Learning Disability Services** – where there is LD diagnosis
- **Oral Health – Dental** – prevention and treatment service
- **LAC – Looked After Children** - nurses who work only with looked after children. When notified by Social Work that a child has become looked after, the LAC nurses will undertake a health assessment. They may refer to school nursing for ongoing reviews and wider support.



Head Lice

Head lice are spread through head to head contact at home, while playing or in school.

- Regular wet combing of your child's hair using a head lice detection comb is the best way to catch this possible problem at an early stage.
- The only way to be sure that your child has head lice is to find a live louse.
- If you find live lice, get the correct lotion from your doctor, health visitor or pharmacist.
- Shampoos and other treatments are not effective.
- One treatment is two applications of the treatment lotion, seven days apart. If this is not followed, then re-infection is likely.
- Advise family members and close friends that your child has head lice and that they should check their own hair.
- Only treat if live lice are found.
- Don't be shy about advising others of this possible problem because you would likely tell family and friends about other infections which might affect them.
- Regular wet combing of your child's hair with the head lice detector comb is the best protection as it allows you to detect the condition and treat it speedily.



Medicine Administration



If a pupil becomes ill or is injured at school treatment will be given by a member of staff in school. If the occasion demands, the parent or if necessary, the emergency contact will be called. If no contact can be made, the school will take the further step of consulting the pupil's GP surgery or will take the pupil to hospital for attention.

After an accident any necessary council paperwork will be completed and filed in school and a copy will be sent home if required.

We must have an emergency contact number on file in the school and it is important that parents notify the school of any change of phone numbers of these contacts or of

themselves and any change of employment.

Parents must inform the school about illnesses such as diabetes, asthma, epilepsy or migraine which could affect the child in the school so that necessary health care plans can be made.

The administration of prescribed medicines in a school is at the discretion of the Head Teacher. If your child takes a prescribed medicine, then a medicine administration form must be completed and signed by the parent. These forms are available from the school office. Medicine containers must be clearly labelled with child's name, name of medicine, the required dosage and timing.

If your child is in P4-P7 they will be responsible for carrying their inhaler at all times. P1-P3 inhalers will be kept with the class teacher.

Staff in the school are first-aid trained and/or allergy and asthma trained.



Use of social media



St. David's RC PS understands the benefits of using social media; however, if misused, our school community can be negatively affected, such as by damaging the school's reputation. We advise parents, and carers to conduct themselves on social media using the following three commons approach to online behaviour:

- Common courtesy
- Common decency
- Common sense



Mobile Phones

The benefits of mobile phones are recognised. Many young people and their parents regard them as an essential means of communication. Mobile phones can continue to be brought into schools however pupils will not be able to use them during the school day and will be expected to give their phone to their class teacher at the start of the day and collect it at the end of the day. If you need to get a message to your child during the school day, please call the school office. **Please note the school will not be responsible if any phones break or go missing during the school day.**



School Policies

We are currently reviewing and updating a number of our school policies with pupils, staff and parents/carers.

A copy of our policies are readily available in the school office and are on our school website.

Where relevant a parent/pupil friendly edited copies of policies will be written, and a paper copy will be sent home.

Parental Requests for class lists

Information about your child is held securely and appropriate safeguards are in place. Due to these safeguards we are unable to provide parents and carers with the list of names your child is classmates with.

Section Two – Parental Involvement in the School



Parental involvement is very important as we know children and young people do better on a wide range of measures. These positive effects include:

- Better behaviour
- More confidence and greater self-esteem
- Higher attendance rates
- A lower risk of exclusion
- More enthusiasm about learning
- Better results.

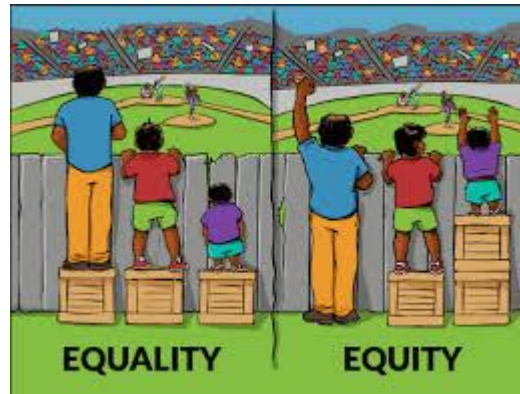
This section contains information about our Learning Together Framework and how parents and carers can get involved in their child's learning.

You can also find out more about the ethos of our school, what our values are and our aspirations for our pupils including how we celebrate pupil success, and links we have with partner organisations and the wider local, national and international community.

Lastly, it includes information on City of Edinburgh Council structures to support the voice of parents and carers. This includes your Parent Council and Parent Teacher Association/Parent Association, how to contact them and how parents and carers can get involved in the life and work of the school.

Connect <https://www.facebook.com/groups/connectingparentgroups> is the national organisation for Parent Teacher Associations and Parent Associations in Scotland, Parent Councils can join too, and it runs an independent helpline service for all parents.

The National Parent Forum of Scotland <https://www.npfs.org.uk> has been set up to give Parent Councils and parents an opportunity to discuss and raise educational issues of mutual interest or concerns at a national level.



Equality

City of Edinburgh Council is committed to improving the quality of life for those who face inequality, harassment, discrimination and prejudice and to harness the talent and celebrate the difference of all who live in the city. This commitment is set out in the Equality, Diversity and Rights Framework which can be viewed on the council's website. As a school, we are committed to fulfilling our obligation of equity and excellence for all learners, with particular reference to protected characteristics under the Equality Act 2010 (race, gender, disability, sexual orientation, religion/belief, age, marriage or civil partnership, transgender status or pregnancy/maternity) and other factors such as poverty.



Children's Rights

The rights of children and young people are at the heart of our code to practice. They are laid out in the United Nations Convention on the Rights of the Child (UNCRC). The UNCRC ensures that children and young people grow up healthy and safe and that their views are taken into considerations in decisions that affect them.



Our curriculum is characterised by the highest standards of teaching and learning and by a constant search for continual improvement. Learning and teaching experiences are planned, purposeful and matched to the needs, abilities and readiness of our pupils. Our relationships with everyone reflect our Christian values, and we emphasise patience, forgiveness and reconciliation. Prayer and worship are an important distinctive feature of our school and our values are evident in our staff's interactions with pupils and each other. Expectations are high for all. We recognise skills and talents in each other and celebrate success and achievement in many ways.

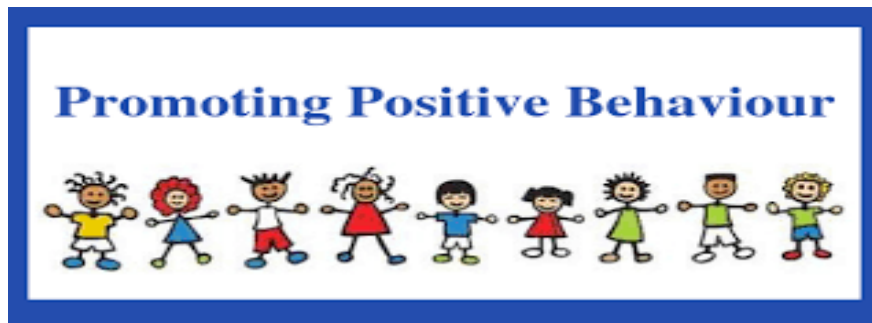


We are committed to supporting the development of the whole pupil and as a result, wish to encourage their development in spiritual, moral, social and cultural terms.

These key human aspects of learning are supported through the following arrangements by:-

- Creating a school ethos which, in every way possible, gives value to these aspects of development, especially by providing an overall atmosphere that is both caring and challenging and which provides opportunities for the development of personal responsibility.
- Promoting social and moral learning through the way in which disciplinary issues are handled.
- Ensuring that staff and adults within the school provide positive models for pupils.
- Arranging regular gatherings of the school as a community and using such occasions to encourage and reinforce the values on which the school is based.
- Enriching the curriculum in all appropriate areas with an emphasis on spiritual, moral, social and cultural development.
- Providing opportunities within the curriculum to advance personal and social development.
- Providing a programme of religious education in which consideration will be given to responses to basic questions relating to the meaning, value and purpose of human life.
- Providing a programme of moral education.

- Taking every appropriate opportunity to acknowledge, value and appreciate the various cultures and heritage of the pupils and to encourage them to appreciate and value the cultures and heritage of others.



Every child and young person has the right to a high quality education. Positive relationships are fundamental to enable effective teaching and learning to take place. All staff focus on positive relationships by looking for opportunities to encourage learner skills, recognise effort and build on strengths. Positive relationships form a foundation that minimises difficulties occurring.

We have adopted the following key principles to create a caring, supportive, learning environment:

- an ethos that values positive, restorative and respectful relationships and promotes shared values
- an inclusive and safe learning environment which supports children and develops their skills and resilience enabling them to become responsible for their own behaviour
- recognising that all behaviour is communication and that understanding what is being communicated and the underlying needs is crucial for assessing and meeting children's needs and finding solutions.

The school uses approaches and strategies which are designed to help prevent and de-escalate difficult situations and identify and support individual support needs.

We understand that everyone learns best when they feel good about themselves. Punishments can make children feel bad about themselves. This can hinder their ability to engage in their learning, including their behaviour. Positive approaches to support behaviour focusses on relationships, skills building, restoration and when appropriate logical or natural consequences appropriate to the child, rather than the implementation of punishments.

We explore and establish "what's happened" with children. To do this we listen to their response whether that is given verbally or expressed non-verbally and act appropriately. Once the reason and purpose for the child's behaviour is known we

explore how we can develop appropriate support or adaptations to address the issue by promoting well-being, offering coping strategies and agreeing constructive solutions.

We also want to engage directly with parents to foster and develop our positive ethos. To work together to maintain and support shared learning community values and excellent home/school communication. We want to work together to address, prevent and resolve any difficulties should they arise and to build on our strengths together.

We promote our school values at all times, providing us with a clear and consistent approach to achieving positive behaviour.



Our values form the basis of all our conversations in relation to behavioural expectations. It is helpful if parents can also discuss these rules / values with their children if there has been an incident in school. The purpose of these conversations is to find solutions and develop skills that will prevent problems in the future.

Additionally, we have a clear view of the qualities of an excellent learner and teacher, created by the learners at St David's. These visuals are used across the school in all classes and form the basis for learning and teaching behaviour expectations.



See appendix 2 for our Positive Behaviour Policy for Parents and Pupils



shutterstock.com • 670729330



Preventing and Responding to Bullying and Prejudice Behaviour Among Children and Young People

City of Edinburgh Council updated their anti-bullying guidance in session 2020-21. As an authority, we are committed to equalities and the wellbeing and protection of children and young people from bullying and prejudice. We work to prevent bullying and prejudicial behaviours and attitudes, and to develop positive relationships with all members of our school communities and wider partners. This work is part of our approach to Getting it Right for Every Child, creating communities that allow children to be Safe, Healthy, Active, Nurtured, Achieving, Respected, Responsible and Included.

Pupil-led equalities groups, which reflect the diversity of the school community, are working to ensure that all children have access to support, are listened to and are involved in the decisions that will continue to make their school a place which feels safe, happy and nurturing.

As a school, we are committed to equalities and the wellbeing and protection children and young people from bullying and prejudice. Our school procedure is informed by the overarching 'Preventing and Responding to Bullying amongst Children and Young People' procedure. We recognise that policy and procedures alone will not address the prevention of bullying; through our core practices (Relationships, Rights Respecting, Resilience, Restorative) we aim to build positive relationships and a culture and ethos which ensure respect, equality and inclusion. We promote an actively anti-bullying and anti-prejudice culture in our school through preventative, pro-active and responsive approaches.

Bullying and prejudice-based behaviours are not tolerated. The school will put in place appropriate support for all children and young people involved in a bullying or prejudice-based incident. We will support children who display bullying or prejudiced behaviour to identify the feelings and views that have caused them to act in this way. We will challenge these views and support children, through education and learning, to develop alternative ways of behaving. Working together with parents is an essential part of our approach to preventing and responding to bullying. When bullying or prejudice happen it is important that all parents involved work with the school to resolve the problems in the best interests of their child.

Learning Together Framework



Parental involvement describes ways in which parents can get involved in the life and work of their child's school. Parental engagement is about parents' interaction with their children's learning. Schools and partners can play a vital role in supporting families to do this effectively by:

- enabling ongoing, two-way communications between home and school;
- supporting parents to contribute to school improvement and making decisions that affect the school;
- using the skills of parents to enrich the curriculum where appropriate; and
- providing opportunities for families to come together and engage with learning

Aims and Rationale

The purpose of our strategy is to ensure excellence and equity in parental involvement and engagement within our schools. It will ensure:

- we have the capacity and skills to support parental involvement and engagement;
- involvement and engagement is monitored and evaluated;
- effective communication is in place between home and school;
- parents can see how their involvement is influencing school improvement;
- we provide appropriate opportunities to involve all parents, whatever their ability, background or interest, to participate in the design, delivery and evaluation of the services and facilities that impact on their children;

- all staff who work with children and young people see the importance of engaging and working with parents.

Parental Involvement

'Parental involvement is about supporting pupils and their learning. It is about parents and teachers working together in partnership to help children become more confident learners'.

Parental Involvement Act, 2006

Getting involved in the life and work at St David's RC Primary School and nursery can include:

- ✓ Establishing and reviewing the Vision, aims, rationale of setting/school
- ✓ Improvement planning
- ✓ Decision-making on education matters affecting child's learning
- ✓ Developing/reviewing policies
- ✓ Organising events for families
- ✓ Using parents' skills to enhance/enrich the curriculum
- ✓ Short-life working groups
- ✓ Volunteering
- ✓ Developing the young workforce
- ✓ Parent Council/Parent Teacher Association
- ✓ Parental representation at school, local authority and national levels



Parental Engagement

Parental engagement can be considered as active involvement in learning.

Parental engagement represents a greater 'commitment, ownership of action' than parental involvement within educational settings such as early learning and childcare or schools.

Goodall and Montgomery, 2014

Your child's school will actively involve you in their child's learning. This can include

- ✓ discussions between parents/practitioners and children
- ✓ Focusing on how families can build on what they already do to help child's learning and to provide a supportive learning environment at home
- ✓ Providing clear and regular communication from school to home
- ✓ Making good use of information technology and the school website



Family Learning

Family learning is a powerful method of engagement and learning which can foster positive attitudes towards life-long learning, promote socio-economic resilience and challenge educational disadvantage.

Family Learning Network, 2016

Family Learning encourages family members to learn together as and within a family, with a focus on intergenerational learning.

Family learning activities can also be specifically designed to enable parents to learn how to support their children's learning.

HOME LEARNING

Learning at Home

Learning at home recognises the vital role that parents, family members, peers and practitioners play in children's learning and development.

Review of Learning at Home 2018

The learning which happens in the home, outdoors and/or in the community, including organised or active learning opportunities

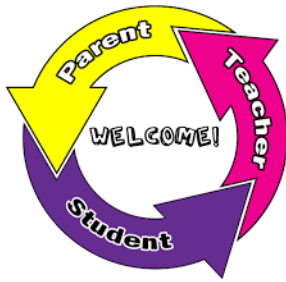
Everyday activities that families already do can be learning at home. These can include

- play
- leisure activities
 - fun events
 - sports
 - trips
 - cultural or volunteering experiences
 - school related activities such as homework, reading and sharing books.



Volunteering

We are always looking for parent volunteers to help in a variety of ways. This includes story-telling, school trips, sharing your own skills/knowledge, helping in the class or with small groups of pupils and helping at events. If you are interested in volunteering in any way, please contact the school office.



Home-school partnership

We always value your opinion on school and educational matters and we provide opportunity to gather your views in different ways. This includes feedback evaluation forms, parent surveys, opinions on school improvement plan, policies and school matters by meeting with the senior leadership team. This helps to inform us of the school strengths, areas of development and next steps.

Parental Consultation/Reporting to Parents Throughout the Year

We have parent consultations twice a year usually in November and March. A full written report is also issued in June which informs you of your child's progress and next steps in their learning.



Parent Forum and Parent Councils

All parents/carers are automatically members of the Parent Forum at their child's school. As a member of the Parent Forum you can expect to –

- receive information about the school and its activities;
- be asked your opinion by the parent council on issues relating to the school and the education it provides;
- work in partnership with staff; and
- enjoy taking part in the life of the school in whatever way possible.

The Parent Forum decides how their representatives on the Parent Council are chosen and how your Parent Council operates. It is important to us that our Parent Council represents the rich diversity of our school community. We warmly invite all parents and carers to volunteer or put themselves forward as representatives on the St David's Parent Group.

The main aims of the Parent Group are:

- To support the school in its work with pupils
- To represent the views of parents and carers
- To promote contact between the school, parents, pupils, providers of nursery education and the community
- To report to the Parent Forum
- To be involved in the appointment of senior promoted staff.
- To raise funds for the school for the benefit of pupils (in some schools the PSA/PTA/PA fulfils this role).

The Parent Group can be contacted via school email: admin@st-davids.edin.sch.uk

The Parent Group have a noticeboard outside the main office where they post the agenda and minutes of meetings and any other relevant information. Please check this regularly. The Parent Group also put this information on the school website.

For more information on parental involvement or to find out about parents as partners in their children's learning, please contact the school or visit the Parentzone website at www.parentzonescotland.gov.uk.



Locality groups and the citywide Special Schools Group

Locality groups and the citywide Special Schools Group enables Parent Councils members to get together to discuss common issues and have their views on local and citywide issues heard.

The above groups meet four times a year. There are four locality groups: north west, north east, south west and south east. There is also one citywide special schools group.

The Consultative Committee with Parents

The Consultative Committee with Parents (CCwP) is a forum that gives parents and carers the chance to discuss citywide and national issues with members of our staff and other groups.

The CCwP meets four times a year. Parent members are chosen at the meetings of the locality groups and citywide special schools group. One parent from the CCwP is put forward to take part in the Education Children Families Committee. This post lasts up to four years.

Education Children's and Families Committee

The committee has one parent representative who speaks on the behalf of parents, taking their views from their work in a school, locality group and the Consultative Committee with Parents (CCwP).

Who to ask

All questions/ requests for information can be sent to

parental.engagement@edinburgh.gov.uk

Your email will be forwarded onto the right person/department to provide the answer/support you need.

Connect

Connect is a charity which supports Parent Councils and works with local authorities. The City of Edinburgh Council pays for all Edinburgh Parent Councils to have membership of Connect.

Connect are committed to making family engagement in children's learning and school lives as good as it can be. They work with parents and educators, providing information, advice and training.

<https://connect.scot/>



Pupil Voice

Pupil voice is very much sought after and valued in many ways in St. David's. The Senior Management team meets termly with a number of pupils in P1 – P7 to have a learners' conversation. The focus of the conversation is on an aspect of school improvement. This helps to inform strengths in the school and next steps.

In the classroom pupils have many opportunities to discuss their learning and next steps. Teachers also seek their views on what they already know and what to learn and how lessons have gone and what would help them the next time.

All pupils in P3-P7 are given the opportunity to be part of our school improvement groups: Pupil Council, Laudato Si, Equalities and Diversity, Rights Knights.

All pupils are part of a House Group – Holyrood, Jedburgh, Melrose, Dunfermline. These are led by P7 House and Vice House Captain. Pupils can voice opinions to these pupils who can bring this information to the senior leadership team.

Section Three – School Curriculum



This section describes how the curriculum is planned and delivered in our school including the range of subjects and subject areas your child will be learning. It also includes information on how pupils develop skills for learning, life and work, including literacy, numeracy and health and wellbeing in and out of the classroom.

As well as giving you information about the statutory curriculum requirements we have included details on sports and outdoor activities available to pupils and the range of facilities available within the school.

Details of how parents will be informed about sensitive aspects of learning e.g. relationships, sexual health, parenthood and drugs awareness are included as well as information about religious instruction and observance and arrangements for parents who wish to exercise their right to withdraw their child.

Edinburgh Learns for Life –A Vision for Education



Our Vision

The Edinburgh Learns for Life vision is to create a fairer, healthier, greener future for everyone. We will work together to ensure that high quality learning takes place in schools and in the wider communities where young people live, learn and work. All

our young people will be supported to make progress in their learning, pursue their interests and passions, without being limited by barriers. We will provide inclusive and equitable learning opportunities for everyone. Learners will be provided with opportunities to lead, and shape, their own learning where a wide range of pathways are valued equally. Through working together, we will form relationships, and connections, which support positive health and wellbeing and reduce poverty.

Curriculum for Excellence: Bringing learning to life and life to learning



Curriculum for Excellence is the curriculum across Scotland for all 3-18 year olds – wherever they learn. It aims to raise standards; preparing our children for a future they do not yet know and equip them for jobs of tomorrow in a fast-changing world.

Teachers and practitioners will share information to plan a child's 'learning journey' from 3-18, helping their progression from nursery to primary, primary to secondary and beyond, ensuring each transition is smooth. They'll ensure children continue to work at a pace they can cope with and with challenge they can thrive on.

Curriculum for Excellence balances the importance of knowledge and skills. Every child is entitled to a broad and deep general education, whatever their level and ability. Every single teacher and practitioner will be responsible for the development of literacy and numeracy from Early Level through to Senior Phase.

It develops skills for learning, life and work, bringing real life into the classroom, making learning relevant and helping young people apply lessons to their life beyond the classroom. It links knowledge in one subject area to another helping make connections in their learning. It develops skills which can enable children to think for themselves, make sound judgements, challenge, enquire and find solutions.

There is an entitlement to personal support to help young people fulfil their potential and make the most of their opportunities with additional support wherever that's needed. There is an emphasis by all staff on looking after our children's health and wellbeing using the Wellbeing Indicators.

Ultimately, Curriculum for Excellence aims to improve our children's life chances, to nurture successful learners, confident individuals, effective contributors, and responsible citizens, building on Scotland's reputation for great education.

Curriculum for Excellence is divided into two phases: the broad general education and the senior phase. The broad general education begins in early learning and childcare and continues to the end of S3 (the third year of secondary school). Its purpose is to develop the knowledge, skills, attributes and capabilities of the four capacities of Curriculum for Excellence.



St. David's Learning Journey



Our school's vision, values and aims are central to our learning journey.

Learners will be given the opportunity to develop skills for learning, life and work including Literacy, Numeracy and Health & wellbeing both in and out of the classroom.

The Curriculum has 8 main subject areas:

- Expressive Arts – Art, Music and Drama
- Languages and Literacy – including Spanish
- Health and Wellbeing – including food technology and PE
- Mathematics and Numeracy
- Religious Education
- STEM – Science, Technology, Engineering and Maths
- Social Studies – History, Geography and Modern Studies
- Digital Empowered Learning

Subjects are sometimes taught on their own but are often taught together. This is called inter-disciplinary learning or IDL.

For example – a piece of writing (Literacy) about a science experiment that they have done (Science) and included measure (Maths and Numeracy).

Teachers plan the curriculum carefully and met regularly across a level and stage to ensure progression and coverage.

Learners are encouraged to be 'leaders of their own learning' including choosing the way they learn, the way they present a task and level of challenge of task that they complete.

Learners are involved in their own learning and are given regular feedback so that they know their strengths and next steps.

Together, children and staff have created St David's Learner Dispositions – MIND. Learner dispositions refer to cognitive and emotional habits that a learner has formed in relation to learning. The attributes of MIND enable learners and all staff to develop and maintain a positive language of learning at all stages of the school, which encourages independence, resilience and ambition.



We work with many outside agencies to enrich the curriculum and learners will have opportunities to go on school trips to enhance their knowledge and understanding of a subject.

Wider achievements are very important in St. David's and learners will have lot of chances to celebrate success.

Pupil voice is very important in St. David's and learners will have lots of opportunities to participate in school decisions, strengths and next steps. This also informs areas of the school or curriculum that we need to improve.

We hold regular Sharing our Learning events where you can see how the curriculum is taught in St. David's.

St. David's also participate in curriculum themed weeks including Science, Maths, Health and Well-being.

You can find out more about the National Curriculum on

<https://education.gov.scot/education/parentzone>

And aspects of the school curriculum on our website

www.stdavidsrc.com

Empowered Learning



The Empowered Learning programme has given every school pupil from P6 to S6 in Edinburgh their own digital device as part of our ambitious and inclusive education strategy, Edinburgh Learns for Life.

The 1:1 roll-out started from December 2021 and was completed in December 2022 thanks to a £17.6m boost to learning and teaching. In addition to the personal distribution, iPads were issued to P1 to P5 groups on an agreed ratio within each school.

Key elements of the programme include:

- 27,000 new iPads issued to pupils/teaching staff
- Refreshed iPads for up to 12,000 pupils/teaching staff
- Expansion of wireless connectivity in schools
- Providing opportunities for children to be creative and engaging in their learning
- A programme of professional learning for teachers



Active Learning

Curriculum for Excellence emphasises the value of an active learning approach. In the early years, children will have a range of learning experiences that include planned and purposeful play and stimulating learning which engages and challenges children's thinking using real life and imaginary situations. As children progress through school they continue to be involved in active learning experiences which are engaging and give them ownership of their own learning.



Learning Through Play

Research shows play-based learning has a positive and lasting impact on children's learning, teaches them skills relevant to the 21st century. Integrating learning and outdoor experiences, whether through play in the immediate grounds or adventures further afield, provides relevance and depth to the curriculum. Early Years Practitioners and teaching staff (Nursery, P1 and P2) use a play-based approach that involves both child-initiated and teacher-supported learning that encourages children's inquiry through interactions that aim to stretch their thinking to higher levels.



Planning Children's and Young People's Learning

Teachers in nursery, primary and secondary schools share their learning intentions with pupils, parents and carers. This takes place on a day-to-day basis, by agreeing the aims of an individual piece of work.

Longer-term planning also takes place in a variety of forms. Teaching staff meet termly to plan across a level to ensure progression and all experiences and outcomes are taught.

Class teachers involve learners in planning by finding out what they already know about a subject, the gaps in learning and what they want to learn.

Learners are also encouraged to choose the level of task to complete and to the way they want to complete the task to demonstrate their learning.

Learners are informed of what the need to do to achieve the learning i.e. the learning intention, what they are learning and the success criteria, the steps they need to take to achieve the learning.

Parents are informed of planning and what learners will be learning through termly learning leaflets/class padlets.



Learning is also shared termly with parents at Sharing Our Learning events.

Parents are consulted through an evaluation form of what they would like to see at future Sharing Our Learning mornings.



Parents are encouraged to leave feedback and comments on the School Improvement display to comment on strengths and to inform next steps.



Assessment

As pupils progress through our school, teachers use a range of assessment strategies, including Assessment for Learning strategies as well as setting tests. Pupils are also involved in assessing their own progress and developing their next steps.

Pupils in P1, P4, P7 and S3 complete online standardised assessments in literacy and numeracy as part of everyday teaching and learning. The assessments help to identify children's progress, providing diagnostic information that support teachers' professional judgement. The information provided by the assessments helps teachers to assess children's progress and to plan next steps in learning.

The senior phase (S4-S6) builds on the broad general education by continuing to develop learners' knowledge, understanding and skills. National Qualifications are designed to be flexible. Discussions are held with young people and parents on the most appropriate learning pathways.

We recognise that all pupils do not develop and progress at the same rate and, therefore, we use both group and individual methods to ensure that all pupils are given appropriate instruction and the opportunity to succeed. Please contact the school as soon as possible if you have any concerns about your child's progress.

In St. David's pupils are assessed regularly by class teachers to inform them of progress and next steps and a range of strategies are used including formal and informal tasks.

Formal – written, online

Informal – questioning, feedback

Parents will have the opportunity to find out how their child's learning is progressing at the parent consultations in Term 1 and Term 3.

A formal written report is issued in June. This will report on pupil progress and strengths including next steps.



Homework

We have a clearly defined policy on homework, a copy of which will be distributed to you on an annual basis. It is also available on the school website.

Pupils are regularly given homework to support their learning and to encourage them to become more organised and self-supporting in their learning. Homework tasks will be given where a teacher feels a particular child or group of children may benefit from it and will be in line with your school's homework strategy.

The homework will be organised according to the stage and ability of the child, it can arise from all curricular areas, and it may include written, oral or practical activities. The tasks set will be interesting, worthwhile and challenging for the child.

Parents are encouraged to help pupils with their homework as a means of keeping them up to date with the work of the class and the child's progress and to promote partnership between the school and parents. Homework provides an opportunity to consolidate what has been learned in class and makes you aware of what your child is learning and provides you with a useful discussion starter. Homework is also an integral part of school work. Parental interest and co-operation in ensuring homework is undertaken is appreciated.



Religious Instruction and Observance

Pope John Paul, on his visit to Scotland, reminded us that parents are the first teachers of their children in the ways of Christ. Now we are happy to share this task.

The young child has a great capacity for awe and wonder and this is the first step to worship. The teacher will build on the child experience of joy and love in life. The class teacher shares your child's faith. Together they will explore God's wonderful world and with the eyes of faith, your child will be helped to develop a Christian vision of life and learn of his uniqueness in the eyes of God.

Children learn other World Religions and it is hoped that this and the ethos of a Catholic school will enable them to have a greater understanding and tolerance of other religious beliefs and practices. There are strong and natural links with the Church and school. Catholic parents are encouraged to share the programmes for the Sacraments of Reconciliation, Holy Communion and Confirmation when children are presented for these sacraments. The parish and school, work together in partnership.

School Masses are regular events in our calendar and children of other religions share in these experiences. Worship within their own faith however is understood and celebrated.

The school uses 'This is our Faith' to teach R.E. and other world religions.

Our relationship programme is 'God's Loving Plan'.

Parents who wish to exercise their right to withdraw their child from religious instruction and / or observance should contact the head teacher, in writing, and alternative arrangements will be made for your child.

We also use the City of Edinburgh 'Resilience' Programme and 'Keeping Safe' to teach other aspects of Health & Well-being.



Read, Write, Count

The Read, Write, Count programme aims to support parental engagement in literacy and numeracy. Gift bags are distributed annually to all P2 and P3 pupils in Scotland by Scottish Book Trust. The gift bags contain essential literacy and numeracy materials to support children's learning, as well as advice and support to parents.

Studies show a direct link between a strong family learning environment and progress in reading, writing and counting. In addition to the parent guide included in the gift bags, the Parent Club website (<https://www.parentclub.scot/>) offers a range of hints, tips and advice to help parents engage in their child's learning.



First Minister's Reading Challenge

The First Minister's Reading Challenge is an inclusive, exciting programme for all children – fostering a love of reading for pleasure. Research shows that reading for pleasure is crucially important for children's development.

The Challenge is open to all local authority and independent primary and secondary schools across Scotland, as well as, libraries and community groups. You can find out more information on the Challenge and also how schools can register to take part here: <https://www.readingchallenge.scot/>

A reading app called Bookzilla, aimed at S1-S3 pupils, helps them find and recommend books and to set themselves reading challenges.



Extra-Curricular Activities



We offer a wide a range of sporting and cultural activities as possible.

St. David's provide a range of extra-curricular activities available for pupils during lunchtime and after school. Parents will be informed about these by the school. In addition to in-school activities, classes also make regular educational visits and field studies. These visits are linked to pupils' class work.



Active Schools

The fundamental aim of Active Schools is to give school-aged children the tools, motivation and the opportunities to be more active throughout their school years and into adulthood, and to develop effective pathways between schools and sports clubs in the local community. These opportunities are available before, during and after school, as well as in the wider community. For further information contact the Active Schools Coordinator Fiona Damen through the school office.

Section Four – Support for Pupils

This section gives information about how pupils' additional support needs will be identified and addressed, and the types of specialist services provided within our school.



Getting It Right for Every Child

Taking care of our children's well-being and making sure they are alright - even before they are born - helps us ensure the most positive outcomes for them later in life. It gives them the potential to grow up ready to succeed and play their part in society. Our school adopts the Getting it right for every child in Edinburgh approach to give the right help to children, young people and families, when they need it from a joined up multi agency team.

Getting it right for every child aims to improve outcomes for all children and young people. It promotes a shared approach that:

- builds solutions with and around children and families
- enables children to get the help they need when they need it
- supports a positive shift in culture, systems and practice
- involves working together to make things better

Getting it right for every child is the foundation for work with all children and young people, including adult services where parents are involved. It builds on universal health and education services and is embedded in the developing early years and youth frameworks. Developments in the universal services of health and education, such as Better Health Better Care and Curriculum for Excellence, are identifying what needs to be done in those particular areas to improve outcomes for children.

Protecting Children and Young People

We place a high priority on the well-being and safety of our pupils. To this end we have in place a personal safety programme to give pupils knowledge and life skills to keep them safe from all form of abuse. Where we have concerns that a child about the possible abuse of pupils we are required to follow the Edinburgh and the Lothian's Inter-Agency Child Protection Procedures which set out the specific duties and responsibilities towards the child and their parents/carers.

Additional Support Needs

As with all local authority schools in Scotland, this school operates under the terms of the Additional Support for Learning Act (2009) and its accompanying Code of Practice: <https://education.gov.scot/parentzone/additional-support/the-additional-support-for-learning-act/>

It provides the following information:

- (a) the authority's policy in relation to provision for additional support needs,*
- (b) the arrangements made by the authority in making appropriate arrangement for keeping under consideration the additional support needs of each such child and young person and the particular additional support needs of the children and young persons so identified.*
- c) the other opportunities available under this Act for the identification of children and young persons who -*
 - a) have additional support needs,*
 - b) require, or would require, a co-ordinated support plan,*
 - c) the role of parents, children and young persons in the arrangements referred to in paragraph (b),*
 - d) the mediation services provided*
- e) the officer or officers of the authority from whom parents of children having additional support needs, and young persons having such needs, can obtain advice and further information about provision for such needs.*

Further details of the policies and procedures can be found on Edinburgh Council website.

The Act requires each Education Authority to publish information about the Act. In on the Act, was produced by the City of Edinburgh Council:

<https://www.edinburgh.gov.uk/downloads/file/22136/in-on-the-act>

Literacy Difficulties/ Dyslexia

Dyslexia is evident when accurate and fluent word reading and/or spelling develops very incompletely or with great difficulty. This focuses on literacy learning at the 'word level' and implies that the problem is severe and persistent despite appropriate learning opportunities.

*The Authority also recognises that there may be **associated difficulties***

- Reading comprehension
- Phonological awareness
- Processing: auditory and/or visual processing of language-based information
- Short-term and working memory
- Organisational skills and motor skills
- Maths
- Emotional and behavioural difficulties

Support and assessment begin in the classroom. Class teachers and Support for Learning teachers have resources and training to identify this learning difference and to put appropriate support strategies in place.



Support for Learning

In St. David's we have a Support for Learning teacher (SfL) who works alongside class teachers to identify and support learners with a barrier to their learning or who may require an intervention to support learning. The range of support is varied and includes short- and long-term targets.

If class teachers have concerns, they gather evidence and making a referral to the SfL teacher and the necessary support is provided.

If the pupil's needs can not be met by staff in the school, then a Child Plan Meeting will take place. Parents and carers are always involved in this process and pupil views are sought.

If you have any concerns about your child's learning, then please speak to the class teacher in the first instance.

We work with other agencies and professionals – for example, Social Work Services, Educational Psychology Service, National Health Service and you the parent to make decisions with regards to the best possible education to meet the needs of your child within the resources available.

Parents, carers and children with additional support needs can also seek independent advice and support through:

- Enquire: www.enquire.org.uk Telephone 0845 123 2303
- Scottish Independent Advocacy Alliance, www.siaa.org.uk Telephone 0131 260 5380 Take
- Note: (National Advocacy Service for Additional Support Needs) (Barnados in association with the Scottish Child Law Centre) www.sclc.org.uk Telephone 0131 667 6633.



English as an Additional Language



The Education, and Children's Services Department provides English as an Additional Language (EAL) support for schools. Specialist EAL Teachers work with schools to support developing bilingual learners' English language skills and access to all areas of the curriculum, to enable them to achieve their potential.

"At St David's Primary, we strive to develop English while continuing to value, maintain and encourage all home languages. We take pride in the diversity of our school community." (School language guidance statement - see school website).

We encourage all our learners to achieve the highest possible standards and we do this by taking account of each child's life experiences, needs and potential.

The majority of our learners have particular learning and assessment requirements, which are linked to their progress in learning English as an Additional Language (EAL).

Children who are learning EAL have skills and knowledge similar to those of monolingual English-speaking children. These range from those who are working in advance of their peers to those who have other additional support needs. Their ability to participate in the full curriculum may well be in advance of their communicative skills in English.

We work with other agencies and professionals – for example, Social Work Services, Educational Psychology Service, National Health Service and you the parent to make decisions with regards to the best possible education to meet the needs of your child within the resources available.

Parents, carers and children with additional support needs can also seek independent advice and support through:

- Enquire: www.enquire.org.uk Telephone 0845 123 2303
- Scottish Independent Advocacy Alliance, www.siaa.org.uk Telephone 0131 260 5380 Take
- Note: (National Advocacy Service for Additional Support Needs) (Barnados in association with the Scottish Child Law Centre) www.sclc.org.uk Telephone 0131 667 6633.



Pastoral Support

This support takes many forms in St. David's RC PS from Nurture to working with outside agencies to ensure pupils and families receive the support that they need.



Transitions – Moving to a New School or Leaving School

This section also gives information about transition.

There are also details about making a placing request to another school.



Nursery Class Provision

Our Nursery capacity is 32 full-time places.

Nursery class provision is non-denominational. This means that all nurseries are open to children and parents of all religions and beliefs. Placement in the nursery class does not guarantee a place in the primary school.

Transfer from Nursery to Primary

Before leaving nursery, a transfer of information record for each child will be prepared by nursery staff to ensure a smooth transition and continuity of education for the child transferring to primary.

In St. David's we have a structured transition programme into P1 including a Meet the Teacher Event in June.

Primary School Admissions

Starting school is a very important milestone both for children and their parents. The vast majority of our parents choose their local, catchment school and we plan our education provision to ensure we can provide places for new pupils at their catchment school.

In the run-up to November's registration week for the new Primary 1 intake each school will offer an opportunity for you to visit them. You can speak to staff to find out more about the school first-hand. You can see how the school runs; discuss the curriculum and their priorities as well as seeing recent examples of pupils' work on display. In many cases you may also have the chance to meet other parents who already have children there. All of this will help you understand the school's unique character and give you an insight into the learning environment that your child could enjoy there.

All our schools offer a high-quality educational experience and hope to work with parents and carers to support their children.

Primary to Secondary Transfer

Visits to our local secondary school are organised before the summer holidays and children from other catchment schools who will be attending the same secondary school will have the opportunity to meet and get to know each other and their teachers. While the children are participating in classroom activities and meeting their class teacher, parents will have an opportunity to view the school and are given a brief explanation of school life.

If you wish your child to attend a secondary school other than the catchment denominational or non-denominational secondary school for your home address, you will be required to make a Placing Request as detailed in the Placing Request section below.

You do not need to submit a Placing Request if you want your child to transfer from a non-denominational secondary school or vice-versa at the primary to secondary

transfer stage, as long as the intended secondary school is still the catchment school for your home address. Parents of children who are planning to change from denominational to non-denominational or vice-versa between primary and secondary school should ensure that both the primary school and the intended secondary school know what is to happen by the end of September in the year preceding the move.



Our catchment High School is St. Augustine's RC.



St. Augustine's provide a varied transition programme for P5-P7. This includes visits to the school to participate in a range of curricular activities.

The High School also attends our Meet the Teacher Event and parent consultations to provide parents with information about the school and to meet new parents.

St. Augustine's also have an annual Open Evening for parents to visit and meet staff and pupils.

P7 pupils will have a 3-day transition visit in June to familiarise them with their new school.

Any pupils requiring additional support with transition to High School will be invited to take part in an enhanced transition programme. This will allow them extra visits and activities at the High school before they start.

St. Augustine's Transition Teacher works in school alongside the P7 teachers throughout their final year at St David's. This enables a smooth and positive transition for all and allows children to maximise learning experiences when they reach high school.

P7 teaching staff also complete a detailed transition form for every pupil.

P7 pupils complete a pupil profile on My World of Work and use this when they go to High School.

Placing Requests

As a parent, if you don't want your child(ren) to be educated in your local catchment school, you have the right to make a Placing Request for your child(ren) to attend another school.

If you would like your child to start P1 or S1 at a school outside your catchment area, you must make a Placing Request. You can get a Placing Request application form at any nursery or primary school in Edinburgh from mid-November and must return it by **24 December** to:

e-mail: school.placements@edinburgh.gov.uk

post: School Transactions
P1/S1 Placements,
PO Box 12331,
EDINBURGH
EH7 9DN

If we receive your application form after 24 December, your request will be considered but if we receive your application form after **15 March** places in your chosen school may no longer be available.

The Council must grant Placing Requests where possible. If there are more places available in a school than there are placing requests, all placing requests are usually granted.

If the school you choose has more placing requests than available places, each case is looked at individually. Please include all relevant details on your Placing Request application form so this can be considered.

As school rolls have increased there has been a decrease in the number of places available for children living outside the catchment area. This has resulted in high numbers of placing requests being refused.

If a Placing Request is successful for one child, this does not guarantee a successful Placing Request for their sibling. This could mean parent(s) / guardian(s) have children attending different schools.

Transport for Placing Requests

If a Placing Request is successful, parents will be responsible for the safety and transportation costs of their child to and from their chosen school.

Further information

Further information on school placing requests can be found on our website at:
http://www.edinburgh.gov.uk/info/20256/school_places/1375/school_placing_requests

Section Five – School Improvement

The section gives you an overview of the main achievements of the school within the last 12 months and performance information relating to literacy, numeracy and health and wellbeing.

Raising Attainment

Monitoring performance and using the resulting information to secure improvement is an important part of the work of head teachers, school staff and officers within Education, and Children's Services.

Standards and Quality Report

Every year each school publishes a Standards and Quality report which highlights the school's major achievements.

Achievements 2023-24

- Renewed School Vision:



At St David's, our HEART is at the centre of all our actions and interactions.



At St David's, we recognise that a healthy BODY nourishes a healthy mind.



At St David's, our SOUL connects us to our faith and our sense of community.

- Learner Dispositions – a consistent language of learning across the school:



At St David's, our MIND drives our learning forward with ambition and aspiration.

- **Curriculum Drivers**

Raise	Raise Attainment
Develop	Develop Skills and Knowledge
Ensure	Ensure high quality learning and progress for all
Address	Address inequity
Overcome	Overcome inequality
Support	Support children
Provide	Provide opportunities for now and later in life

- Increased knowledge of data, what it means and how to use it to inform planning and next steps: ensuring that ambitious targets are set and met for all learners.
- A more consistent approach to positive and ambitious language of learning at

all levels of the school (MIND)

- Increased pupil voice in school improvement – Rights Knights, Equalities Group, Pupil Leadership Group, Sports Ambassadors, Laudato Si
- Children more actively involved in planning for learning: weekly, termly and yearly.
- A more consistent approach to the teaching of writing including expectations of writing across stages. Creation of Writing genre planner to support all learners and those learning English as an additional language.
- Moderation opportunities have ensured increased teacher understanding and accuracy when reporting Curriculum for Excellence levels for learners. Teacher visits to High School to understand next steps for our learners beyond St David's.
- Greater knowledge and understanding of Stages of English and gaps in individual pupils learning.
- Increased teacher confidence and ability in meeting the learning needs of all learners.
- Increased leadership opportunities for all staff – teaching and support staff.
- Variety of after school clubs and opportunities for pupil wider achievements and successes.
- Creative curriculum delivery through partnership work ensuring that children are exposed to widest range of knowledge and skills for learning, life and work.
- Rigorous approach to GIRFEC processes and explicit understanding of Safeguarding and Child Protection protocols.
- Co-created understanding of what it means to be an excellent learner and an excellent teacher. Co-created template for the features of an excellent lesson.
- Enhanced transition support for children moving from Nursery to P1 and from P7 to S1. Transition Teacher from St Augustine's working closely with P7 and P6 staff to ensure smooth transitions.
- More robust approach to connecting the Work of Work to our curriculum – helping children to identify pathways to ambitious and fulfilling careers.
- Active and supportive Parent Council – enhancing provision for all learners and developing greater sense of family and community.
- Continued strong links between St David's and the local parishes of St Margaret's in Davidsons Mains, and St Margaret Mary's on Boswall Parkway.

School Improvement Plan

The school writes an annual plan highlighting areas for improvement, how will be achieve this, who will help us and how will we know. This is shared with the Parent Council and their opinions and views are asked for.

The areas for improvement are gathered from attainment data, pupil, parents and staff views.

We have a school improvement working wall in the school and we encourage pupils, parents and staff to add comments to it.

Green – for things going well

Pink – for things to think about

This session we will produce a parent and child friendly version and share this with all parents via email and school website.

Websites

You may find the following websites useful.

- www.edinburgh.gov.uk - contains information for parents and information on Edinburgh schools.
- <https://education.gov.scot/parentzone> - parents can find out about everything from school term dates to exam results. This site also offers information for pre-5 and post school. It also lists relevant publications for parents and provides hyper-links to other useful organisations.
- <https://education.gov.scot/inspection-reports> - parents can access school and local authority inspection reports and find out more about the work of Education Scotland.
- <http://www.ltscotland.org.uk/scottishschoolsonline-index-asp/> - parents can find out about individual schools. They can choose a school and select what type of information they need such as Education Scotland reports, exam results, stay on rates and free school meal entitlement.
- <https://www.childline.org.uk/info-advice/bullying-abuse-safety/> - contains information for parents and children on varying forms of bullying and provides help for parents and children who are affected by bullying.
- <https://respectme.org.uk/> - Scotland's anti-bullying service. Contains information for parents and children on varying forms of bullying and provides help for parents and children who are affected by bullying
- <https://education.gov.scot/> - provides information and advice for parents as well as support and resources for education in Scotland
- <https://www.equalityhumanrights.com/en> - contains information for everyone on equality laws within the government and local authorities.



Glossary

Glossary/Acronyms

1+2	Mother tongue plus two additional languages	The policy to expand and improve learning so that by 2021 every child will learn a first additional language from Primary 1 and a second by Primary 5.
ACP	Anticipatory Care Plan	A document detailing how a patient would like their medical care to progress if they become unwell. For pupils with an ACP it should travel with them on school outings.
ADES	Association of Directors of Education in Scotland	The national organisation which represents directors and senior managers from Scottish local authorities.
ADHD	Attention Deficit Hyperactivity Disorder	ADHD is a condition that affects people's behaviour. People with ADHD can seem restless, may have trouble concentrating and may act on impulse.
AHDS	Association of Head Teachers and Deputies in Scotland	AHDS is a union for promoted teachers in primary, nursery and ASN schools.
AHPs	Allied Health Professionals	An umbrella term for a range of professional practitioners and support staff including Occupational Therapists, Physiotherapists, Speech and Language Therapist and Orthotists.
ASDAN	Award Scheme Development and Accreditation Network	A British education charity and awarding organisation. Provides programmes and qualifications for learners with special educational needs and disabilities.
ASD	Autism Spectrum Disorder	Autism is a lifelong, developmental condition that affects the way a person communicates, interacts and processes information.
ASL	Additional Support for Learning	Additional support for learning means giving children extra help or support so they can get the most out of their education.
ASN	Additional Support Needs	A child or young person is said to have additional support needs if they need more, or different, support to what is normally provided in schools or pre-schools to children of the same age.

BGE	Broad General Education	The broad general education begins in early learning and childcare and continues to the end of S3 (the third year of secondary school).
BNN	Bilingual Nursery Nurse	Nursery Nurse who works in English and another language, to support Early Years settings and schools (P1) in their work with children and families who have English as an Additional Language. This includes joint assessment of children with other additional support needs.
BSA	Bilingual Support Assistant	Bilingual Support Assistants support early stage EAL learners to access the curriculum using their home language and English; support home-school-home communication; and advise on cultural issues. In Edinburgh, we have BSAs for Arabic, Cantonese, Kurdish, Mandarin, Polish, Punjabi/Urdu.
CA	Classroom Assistant	Classroom assistants provide support to teachers.
CfE	Curriculum for Excellence	Curriculum for Excellence is the Scottish curriculum for pupils aged 3 - 18. It helps our children and young people gain the knowledge, skills and attributes needed for life in the 21st century.
CL	Curriculum Leader	A promoted teacher who typically works in a secondary school and has a specific remit to take a lead role in managing their curriculum area. They typically manage and lead a team of teaching staff within their subject area.
CLD	Community Learning and Development	Teams who work with and support communities in areas such as adult and family learning and youth work.
CLPL	Career-long Professional Learning	Ongoing learning throughout a professional's career.
COSLA	Convention of Scottish Local Authorities	A membership organisation for councillors in Scottish local authorities.
CPD	Continuing Professional Development	Each teacher in Scotland is required to undertake a certain amount of CPD each year to maintain or upgrade skills and knowledge (see PRD and PU).
CPM	Child's Planning Meeting	<p>A meeting to implement or review a child's plan. A personalised child's plan will be available when a child needs a range of extra support planned, delivered and co-ordinated.</p> <p>This will explain what should improve for the child, the actions to be taken and why the plan has been created.</p>

		<p>The child's plan is managed by a 'lead professional': someone with the right skills and experience to make sure the plan is managed properly. Depending on the situation and the child's needs, the lead professional may also be their named person.</p> <p>The child and parent(s) will know what information is being shared, with whom and for what purpose, and their views will be taken into account. This may not happen in exceptional cases, such as where there is a concern for the safety of a child or someone else.</p>
CSP	Co-ordinated Support Plan	A child/ young person is eligible for a CSP when they need support at school from services other than education services, on an ongoing basis. A CSP document gathers together reports and plans from all the professionals who will support a child with additional support needs in school, for example Speech and Language Therapists, Social Workers. A CSP should be reviewed every year and parents have a key role in this process.
CT	Class Teacher	Teacher who is assigned to a specific class. In secondary specialist provision they may also be known as the base class teacher.
CYPADM	Children and Young People Acute Deterioration Management	A document detailing how a patient would like their medical care to progress if they become very unwell. For pupils with a CYPADM it should be with them at all times.
DHT	Depute Head Teacher	The role of DHT will vary from school to school but generally they will stand in for the headteacher as necessary and will have responsibility for leadership and management of colleagues.
DO	Development officer	Development Officers are appointed, often on a temporary basis, to undertake specific development work at school or authority level.
D of E	Duke of Edinburgh Award	A youth awards programme founded in the UK in 1956 by Prince Philip, Duke of Edinburgh, that has since expanded to 144 nations. The award recognises wider achievement
EAL	English as an Additional Language	<p>A learner of English as an Additional Language is a pupil whose first language* is other than English.</p> <p>This includes children and young people:</p> <ul style="list-style-type: none"> - who arrive in Scotland from another country during their schooling

		<p>- who have always lived in Scotland / UK and use a language other than English at home</p> <p>* The first language is the language the child was initially exposed to in childhood and continues to be the language used at home and in the community.</p>
EE	Enhanced enrolment	Enrolment meeting with a new arrival whose first language is not English and their and parents-carers (supported by an interpreter, if needed). This meeting enables school to gather full information about the child or young person's language skills (in all languages they speak/read/write), prior education and attainment, strengths and interests, additional support needs; and to share key information about school with the learner and family. Through effective use of information gathered at an enrolment meeting, the school can fully support the learner's transition into education in Scotland.
EIS	Educational Institute of Scotland	The largest teaching union in Scotland
ELC	Early Learning and Childcare	This term is meant to emphasise that care and education of very young children are not two separate things as babies and young children are learning all the time. ELC settings include family centres, nursery schools, nursery classes attached to primary schools and childminders. These places may be run by local authorities, private businesses, voluntary sector organisations and self-employed individuals.
EP	Educational Psychologist	Educational psychologists support schools and the local authority to improve all children's experiences of learning. They use their training in psychology and knowledge of child development to assess difficulties children may be having with their learning.
EPG	Education Placement Group	A City of Edinburgh Council group that considers which specialist provisions to place pupils in.
ESOL	English for Speakers of Other Languages	<p>ESOL is studied by those whose first language is not English.</p> <p>SQA ESOL qualifications for young people (S3-S6) are delivered through the Schools College Partnership and by some secondary schools.</p> <p>ESOL courses and classes for adults are delivered by different providers, e.g. local authorities, colleges, third sector organisations.</p>

EYO/EYP	Early Years Officer/ Early Years Practitioner	EYOs and EYPs make up most of the staff who work in nurseries and pre-school settings in Scotland.
FE	Further Education	This is post-compulsory education which is different from that offered in universities. It is mainly taught in colleges as well as work-based learning or in adult and community learning.
FEF	Finance for Equity Funding	Funding for schools to address the poverty related attainment gap.
FLO	Family Learning Officer	This person may develop and run courses and activities for families so they can help or support their child's learning.
FSM	Free School Meals	
FTE	Full-time Equivalent	This is a way to measure how much time a member of school staff works in school. For example, FTE 1.0 means the person works full time, FTE 0.5 means the person is half-time.
GIRFEC	Getting it Right for Every Child	<p>A Scottish Government policy which aims to make sure all Scotland's children, young people and their families have support across public services such as health, education and social work.</p> <p>The GIRFEC approach supports children and young people so that they can grow up feeling loved, safe and respected and can realise their full potential.</p>
GRT	Gypsy Roma Traveller	<p>The term Gypsy, Roma and Traveller is used to describe a range of ethnic groups or people with nomadic ways of life, including:</p> <ul style="list-style-type: none"> • Gypsy Travellers (English, Welsh, Scottish, Irish Romany people) • Roma (more recent migrants in the UK from Central and Eastern Europe) <p>The term Traveller can also refer to groups that travel (e.g. New Travellers, Boaters, Bargees and Showpeople) however these are not ethnic groups.</p>
GTCS	General Teaching Council for Scotland	The professional body that maintains the register of teachers and ensures teachers' professional standards. In Scotland children must be taught by qualifies and GTCS registered teachers.

GUS	Growing Up in Scotland	Growing Up in Scotland is a long-term study tracking the lives of thousands of children and their families from the early years through childhood and beyond. The main aim of the study is to provide new information to support policy-making in Scotland but it is also intended to provide a resource for practitioners, academics, the voluntary sector and parents.
HE	Higher Education	This is post-compulsory education which usually takes place in universities.
HESS	Health Education Support Service	1:1 support service to meet the complex care needs of pupils that meet specific health care criteria.
HGIOS 4	How Good Is Our School (version 4)	A self-evaluation tool kit for schools.
HNC/ HND	Higher National Certificate/ Higher National Diploma	Higher National Certificate (HNC) and Higher National Diploma (HND) are advanced qualifications equivalent to the first two years of study at university. They are offered by colleges, some universities and many training centres. HNCs take 1 year to complete and HNDs take 2 years.
HT	Head Teacher	Also known as a rector, the headteacher is the leader and manager of a school.
ICT	Information and Communications Technology	ICT in education can be found in the following ways: <ul style="list-style-type: none"> - as a subject, e.g. computer studies - as a tool to support teaching and learning, e.g. the use of whiteboards - as an administrative tool.
IEP	Individual Education Plan	An IEP is a document which sets out the goals and achievements of each school pupil. Every child should have an IEP and should also have an input to its content. It should be reviewed regularly.
ITE	Initial Teacher Education	This describes the courses taken by people who want to become teachers. Courses are available at universities across Scotland through a four year undergraduate course leading to a BEd degree or a one year Post Graduate Diploma in Education (PGDE).
ITS	Interpretation and Translation Service	
JASS	Junior Award Scheme for Schools	A progressive learning programme for young people which has been designed to recognise wider achievement.
LA	Local Authority	There are 32 local authorities in Scotland.

LAC	Looked After Child	<p>Under the Children (Scotland) Act 1995, 'looked after children' are defined as those in the care of their local authority – sometimes referred to as a 'corporate parent'.</p> <p>There are many reasons children may become looked after, including:</p> <ul style="list-style-type: none"> • they face abuse or neglect at home • they have disabilities that require special care • they are unaccompanied minors seeking asylum, or who have been illegally trafficked into the UK • they have been involved in the youth justice system
LGBT	Lesbian, Gay, Bisexual and Transgender	
LNCT	Local Negotiating Committee for Teachers	See SNCT. Some matters are devolved to LNCTs for local agreement. LNCTs are required to have constitutions setting out the recognition and procedures arrangements. In addition to a negotiating function LNCTs also provide a consultative mechanism.
MSP	Member of the Scottish Parliament	
NAS/UWT	National Association of Schoolmasters/ Union of Women Teachers	A teaching union.
NAT 1/2/3/4/5	National 1/2/3/4/5 qualification	<p>National courses have seven different levels; National 1 to 5 then Higher and Advanced Higher, but the buzz words that you will hear the most are Nat 4/5s and Highers as these are most likely to gain your child access to college and university.</p> <p>In fourth year pupils will study for Nat 1 - 5s depending on what their attainment level in each subject is.</p> <p>In most schools a fourth year pupil would tend to sit Nat 4 or 5s. If they decide to stay on for a fifth year, they can sit more Nat 4 or 5s and progress to Highers.</p>
NIF	National Improvement Framework	A Scottish Government framework focused on measuring and evaluating performance in schools. It includes parents and carers as part of the process.

NPFS	National Parent Forum for Scotland	Supported by the Scottish Government, NPFS provides a parental perspective for local and national policies and issues and helps support parental involvement.
NQ	National Qualifications	NQs are taken by young people in secondary schools, colleges and some training centres.
NVQ	National Vocational Qualification	Work based qualifications.
OSCR	Office of the Scottish Charity Regulator	OSCR decides whether to grant an organisation charitable status and to enter it on the Scottish Charity Register. They monitor charities to ensure they comply with the law.
OT	Occupational Therapist	<p>Occupational Therapists can help people with practical tasks if they are:</p> <ul style="list-style-type: none"> - physically disabled - recovering from an illness or operation - have learning disabilities - Have mental health problems <p>They can look at aspects of daily life at home or in school. They look at activities that a person finds difficult to see if there is another way to do them.</p>
PEEP	Personal Emergency Evacuation Plan	A plan for a person who may need assistance, for instance, a person with impaired mobility, to evacuate a building or reach a place of safety in the event of an emergency.
PEF	Pupil Equity Funding	<p>Pupil Equity Funding is money that is given to schools to help them provide the best possible opportunities for children's learning. In particular, it is there to help the school support children who experience barriers to learning and who might be falling behind or not getting the same chances in their education because their family is experiencing poverty or other financial difficulties. This money is given to schools as part of the Scottish Government's Scottish Attainment Challenge.</p> <p>Pupil Equity Funding is designed to support children in Primary 1 to S3 who are eligible and registered for free school meals. However, Headteachers can use their judgement to support other children in their school who are affected by poverty.</p> <p>For every child that is registered, the school will receive £1,200 in addition to their normal budget.</p> <p>The Headteacher decides how the money is spent and has to demonstrate the impact the funding has had on children affected by poverty.</p>

PLP	Personal Learning Plan	A document/folder where a pupil can keep a record of their goals and achievements alongside examples of their work.
PPP/ PFI	Public Private Partnership/ Public Finance Initiative	A collaboration between a local authority and private companies, often used in the building and management of schools.
PPR	Pupil Progress Record	A key record relating to a child/ young person's education that follows them through education.
PRD	Professional Review and Development	PRD is an essential part of the GTCS's Professional Update and professional learning. It provides teachers with ongoing opportunities to reflect on their practice and personal learning through professional learning conversations supported by an annual review meeting.
PSA	Pupil Support Assistant	Supports pupils with a wide variety of tasks in school. Also called Learning Support Assistant or Classroom Assistant.
PSE	Personal and Social Education	PSE addresses the learning outcomes within the Health and Wellbeing indicators in Curriculum for Excellence relating to mental, emotional, social and physical wellbeing, planning for choices and change, substance misuse and relationships, sexual health and parenthood.
PT	Principal Teacher	In primary and special schools this is usually a classroom teacher who also takes on some managerial roles within the school. In a secondary school this is typically a head of department or guidance position.
PU	Professional Update	This supports teachers to develop their skills and work. Teachers are asked to keep a record of their learning throughout their careers. This is logged on their GTCS profile and signed off by their line manager every 5 years.
PVG	Protection of Vulnerable Groups	The Protecting Vulnerable Groups (PVG) membership scheme is managed and delivered by Disclosure Scotland. It helps ensure people who work with children and protected adults
QIEO	Quality Education Improvement Officer	Usually a local authority officer who has a specific job around improving the performance of schools.
RA	Risk Assessment	A systematic process that involves identifying, analysing and controlling hazards and risks.
RME	Religious and Moral Education	

RSHP	Relationships, Sexual Health and Parenthood	
SAC	Scottish Attainment Challenge	<p>The Scottish Attainment Challenge aims to raise attainment of children and young people living in deprived areas, in order to close the attainment gap.</p> <p>It will drive forward improvements in educational outcomes to ensure that everyone is encouraged to be the best they can be.</p>
SALT/SaLT/S LT	Speech and Language Therapist	Speech and language therapists provide life-treatment, support and care for children and adults who have difficulties with communication, eating, drinking and swallowing.
SCCYP	Scottish Commissioner for Children and Young People	The Commissioner aims to promote and protect the rights of children and young people in Scotland.
SCEL	Scottish College for Educational Leadership	SCEL supports teaching staff by providing access to high quality leadership programmes of training.
SCQF	Scottish Credit and Qualifications Framework	This organisation promotes lifelong learning in Scotland. The Framework can help parents and young people to plan learning and develop routes through different types of learning.
SDO	Senior Development Officer	Senior Development Officers are appointed, often on a temporary basis, to undertake specific development work at school or authority level.
SEIC	South East Improvement Collaborative	A collaboration between City of Edinburgh, East Lothian, Fife, Midlothian and Scottish Borders councils to improve schools, early learning settings and other services for children and young people.
SEYO	Senior Early Years Officer	Work in pre-school and nurseries.
SHANARRI	Safe, Health, Achieving, Nurtured, Active, Respected, Responsible, Included	<p>GIRFEC wellbeing indicators which help make it easier for children and families and the people working with them to discuss how a child or young person is doing at a point in time and if there is a need for support.</p> <p>At home, in school or the wider community, every child and young person should be safe, healthy, achieving, nurtured, active, respected, responsible and included.</p>

SIF	Summary of Inspection Findings	This document is available on the Education Scotland website following an inspection.
SIP	School Improvement Plan	This document should show improvement targets for a school. This is typically now included in the SQIP.
SLS	School Leaders Scotland	A union for headteachers and depute headteachers.
SLT/SMT	Senior Leadership Team/ School Management Team	Usually includes the headteacher and depute head teachers; may also include the business manager and principal teachers.
SNAG	School Nutrition Action Group	A committee which usually includes school staff, pupils, parents and local people to promote healthy eating within the school community.
SNCT	Scottish Negotiating Committee for Teachers	A tripartite body comprising members from teaching organisations, Local Authorities, and the Scottish Government. The SNCT follows a negotiating framework for teachers' pay and conditions of service.
SORT	School Operations Risk Toolkit	A risk framework to manage all risk assessments and guidance required in association with the response to Covid-19.
SQIP	Standards and Quality and Improvement Plan	<p>The purpose of the annual SQIP is to report on the main achievements over the last school year and to bring about further improvement to the learning experiences and achievements of pupils.</p> <p>Improvement planning involves identifying what is good about a school, deciding how good a school can be and identifying the best way forward.</p>
SSTA	Scottish Secondary Teachers Association	A teaching union.
STEM	Science, Technology, Engineering, Maths	The name used for this group of subjects.
SVQ	Scottish Vocational Qualification	These qualifications are based on standards drawn up by industry, commerce and education.

TALC	Team Around the Learning Community	A collaborative approach with Educational Settings and Partners to support and maximise learning, attainment and achievement
UCAS	University and Colleges Admissions Service	UCAS process most applications for entry to higher education throughout the UK.
UNCRC	United Nations Convention on the Rights of the Child	This is an international human rights treaty that grants all children and young people (aged 17 and under) a set of rights.
VOICE		A teaching union
VSDS	Volunteer Scotland - Disclosure Services	VSDS is funded by the Scottish Government to support some charities with processing disclosure checks.
VSE	Validated Self-Evaluation	This aims to support and challenge the work of education authorities to improve the quality of education and outcomes for learners.
YAD	Young Adult Disability Social Work Team	SW team that support families of young adults with complex disabilities as they transition from children and families into adult services.
YPPM	Young Person Planning Meeting	See CPM

The information in this school handbook is considered to be correct at the time of publication September 2024, however, it is possible that there may be some inaccuracy as the school year progresses.

Parent Feedback

Please take a few minutes to fill in and return the questionnaire on this page. Your feedback will help us improve the hand book next year.

Tell us what you think

Your feedback will help us to improve our handbook.

Name of school: **St. David's RC PS**

Did you find	Please tick	
1. the handbook useful?	Yes	No
2. the information you expected?	Yes	No
3. the handbook easy to use?	Yes	No

Please tell us how we can improve the handbook next year.

Thank you for filling in the questionnaire. Your views are appreciated. Please return this questionnaire to the school office.

Throughout this handbook the term 'parent' has the meaning attributed in the Standards in Scotland's Schools Act 2000 and the Scottish Schools (Parental Involvement) Act 2006. This includes grandparents, carer or anyone else who has parental responsibility for the child.

I hope you find all of the above information helpful and self-explanatory. If you have any queries about any of the information contained in this handbook, or indeed about any aspect of our school, please do not hesitate to contact me.

Mrs Angela Burgess
Head Teacher
St. David's RC PS